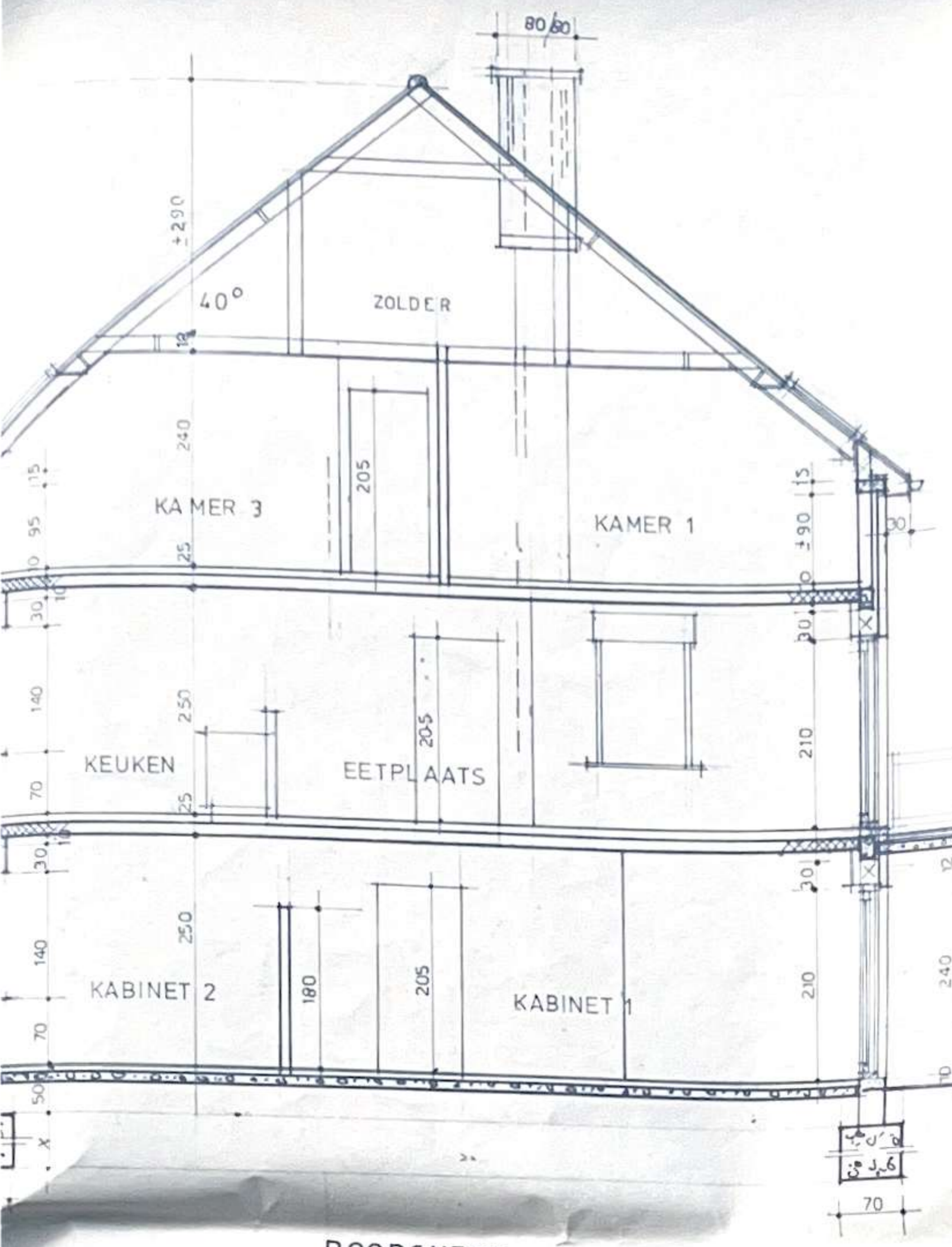
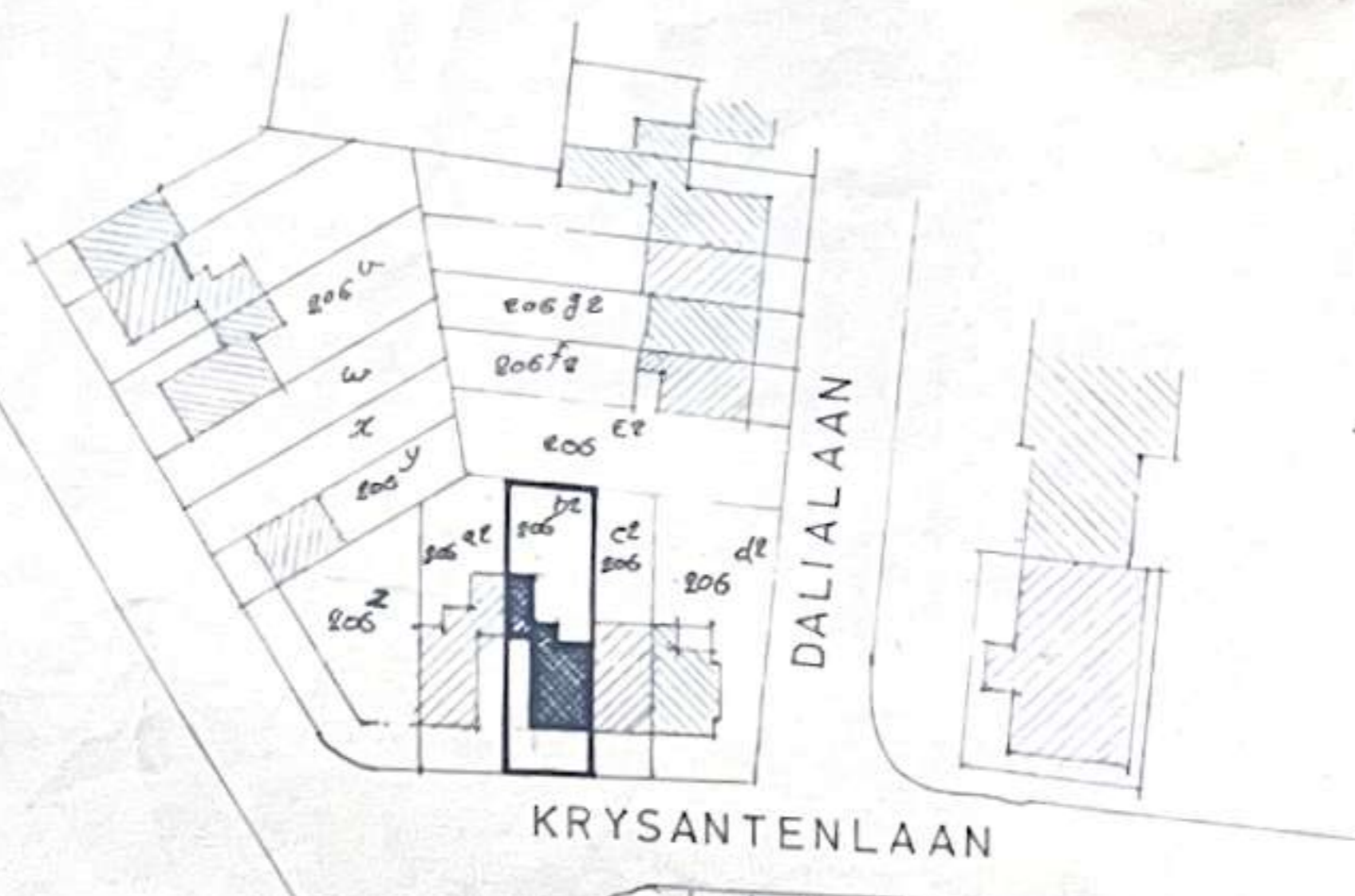


22 AUG. 1986

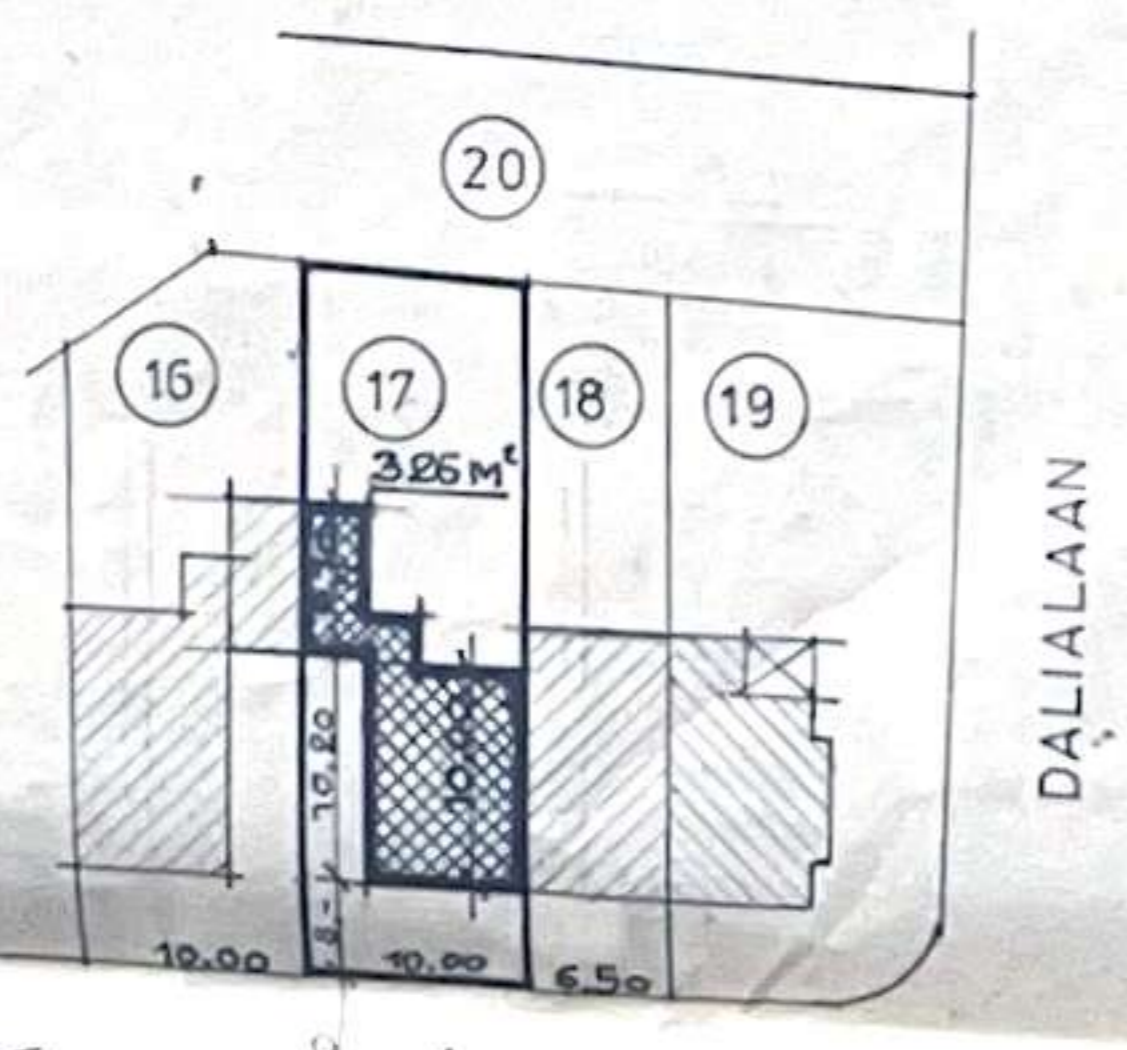
<b>prov:</b> West Vlaanderen	<b>stad:</b> Kortrijk
<b>ligging:</b> Krysantenlaan 8500 Kortrijk	<b>ontwerp:</b> medische praktijk.
<b>kadastral ste:</b> nr 206 B2	 <b>ARCHITECT</b> Didier Degezelle R. Deffourban 1 8500 KORTRIJK tel 056/22 15 12
<b>OPDRACHTGEVER:</b> Marc HOLVOET Hinnestraat 4a Zwevegem	
<b>PLAN</b> algemeen	



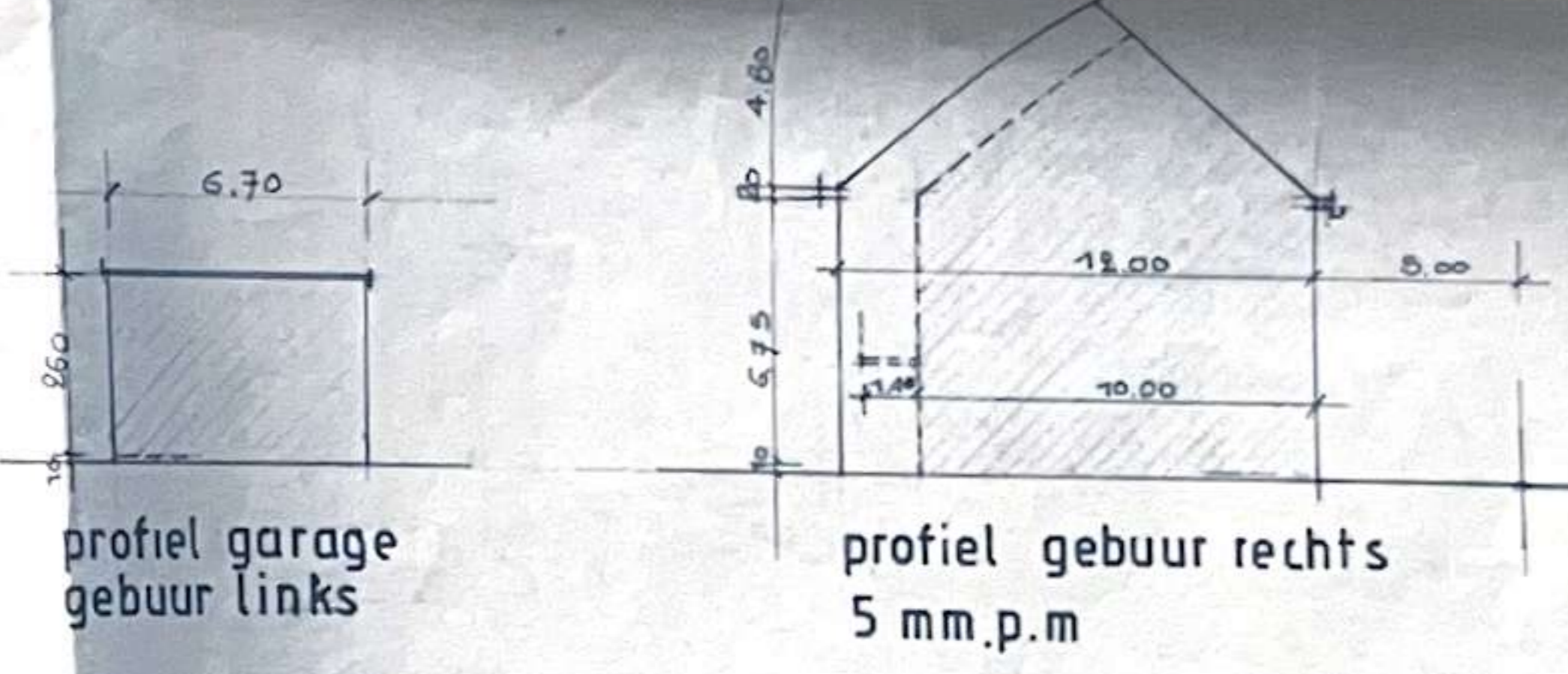
DOORSNEDE



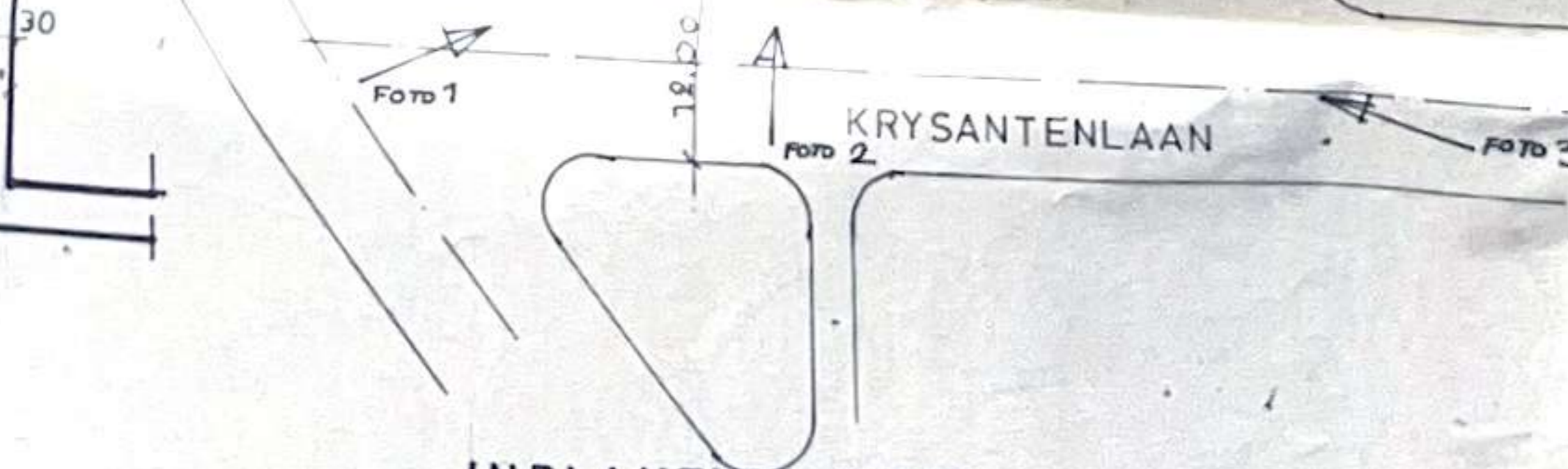
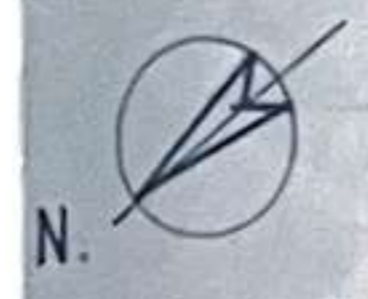
OMGEVINGSPLAN 1/1000



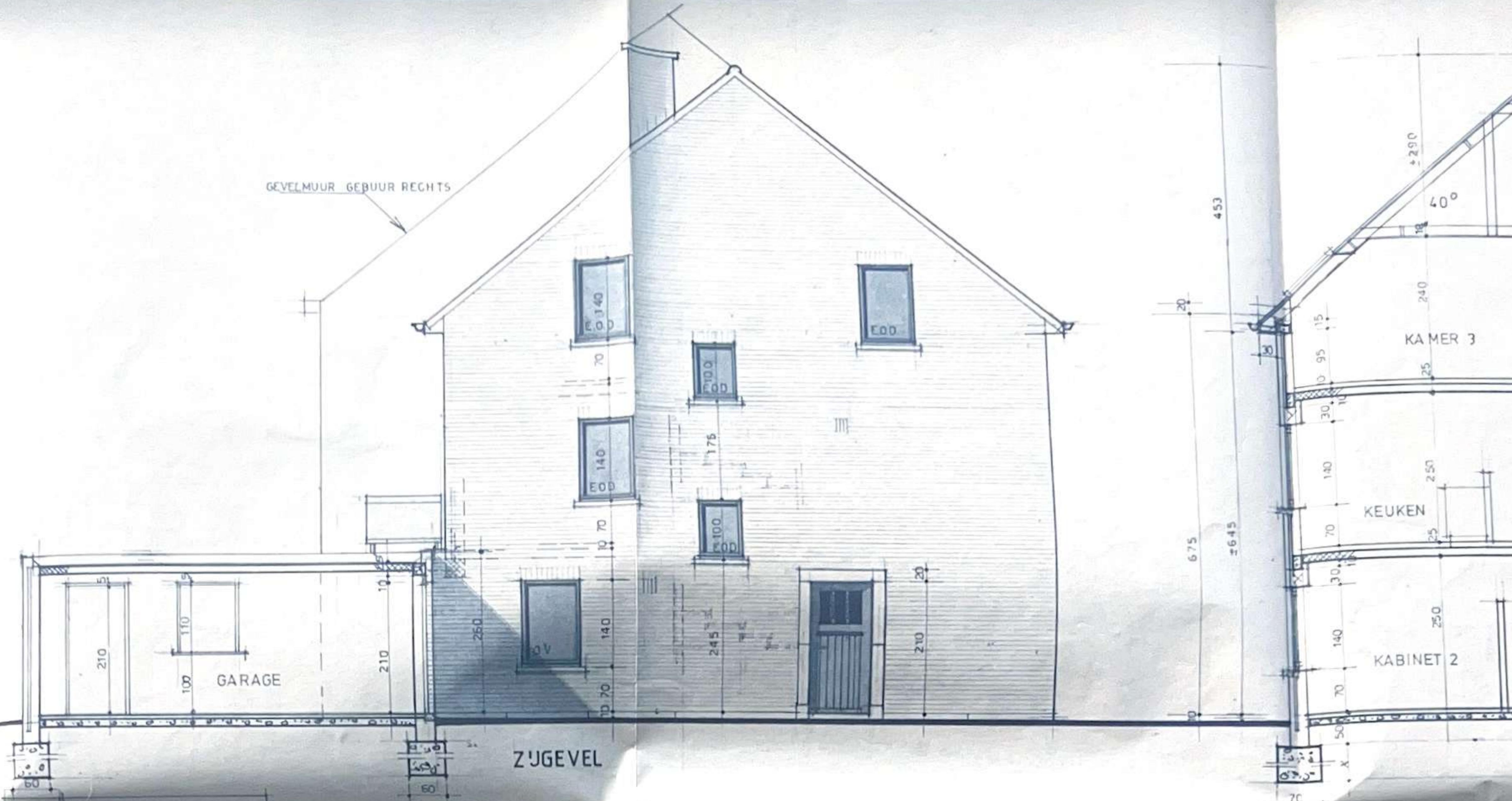
INPLANTING 1/500  
AANWEZIG  
RIOOL - WATER - HYDRANTEN -  
ELEC - OPENBARE VERLICHTING  
GAS - TEL - TV DISTRIBUTIE



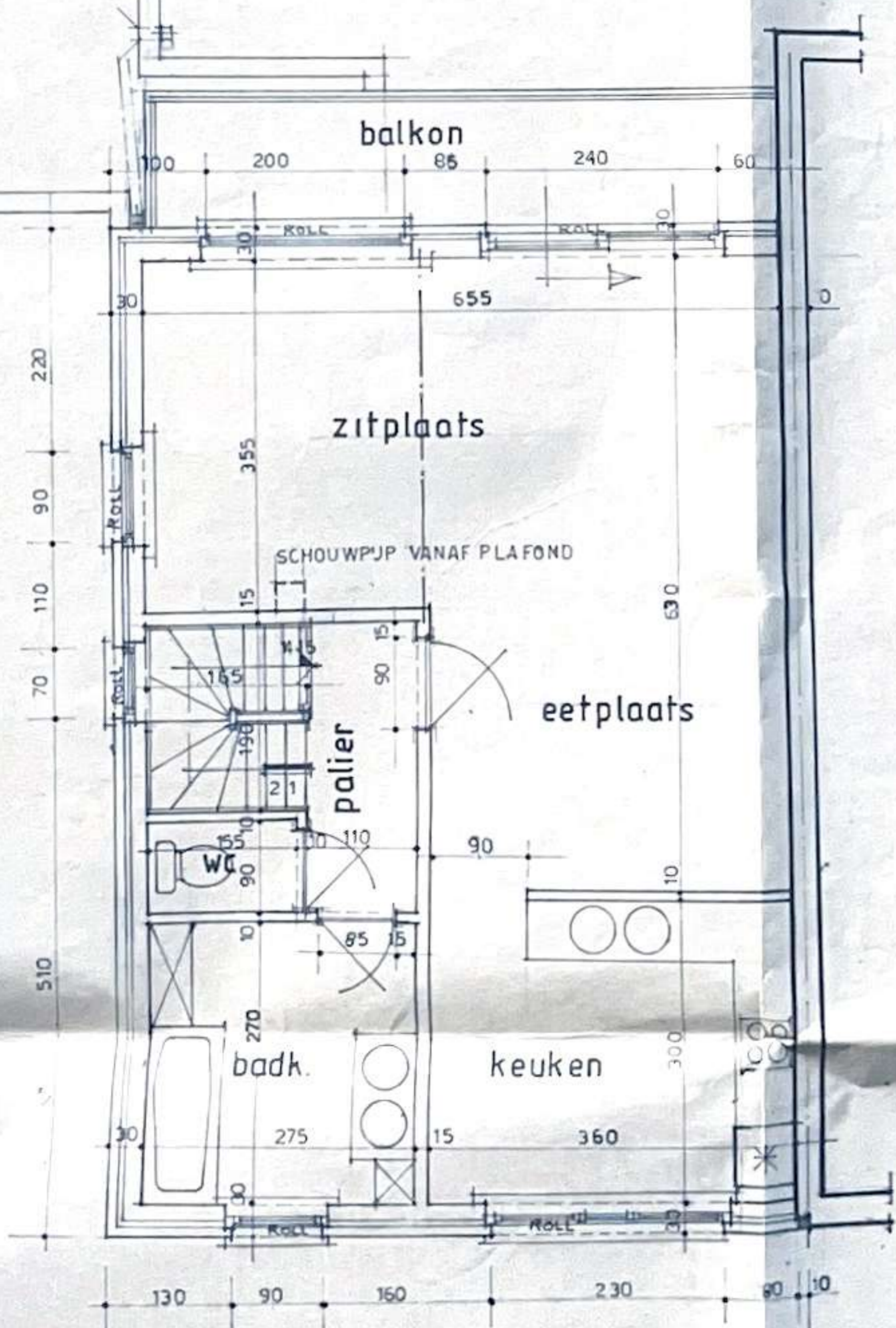
LIGGING



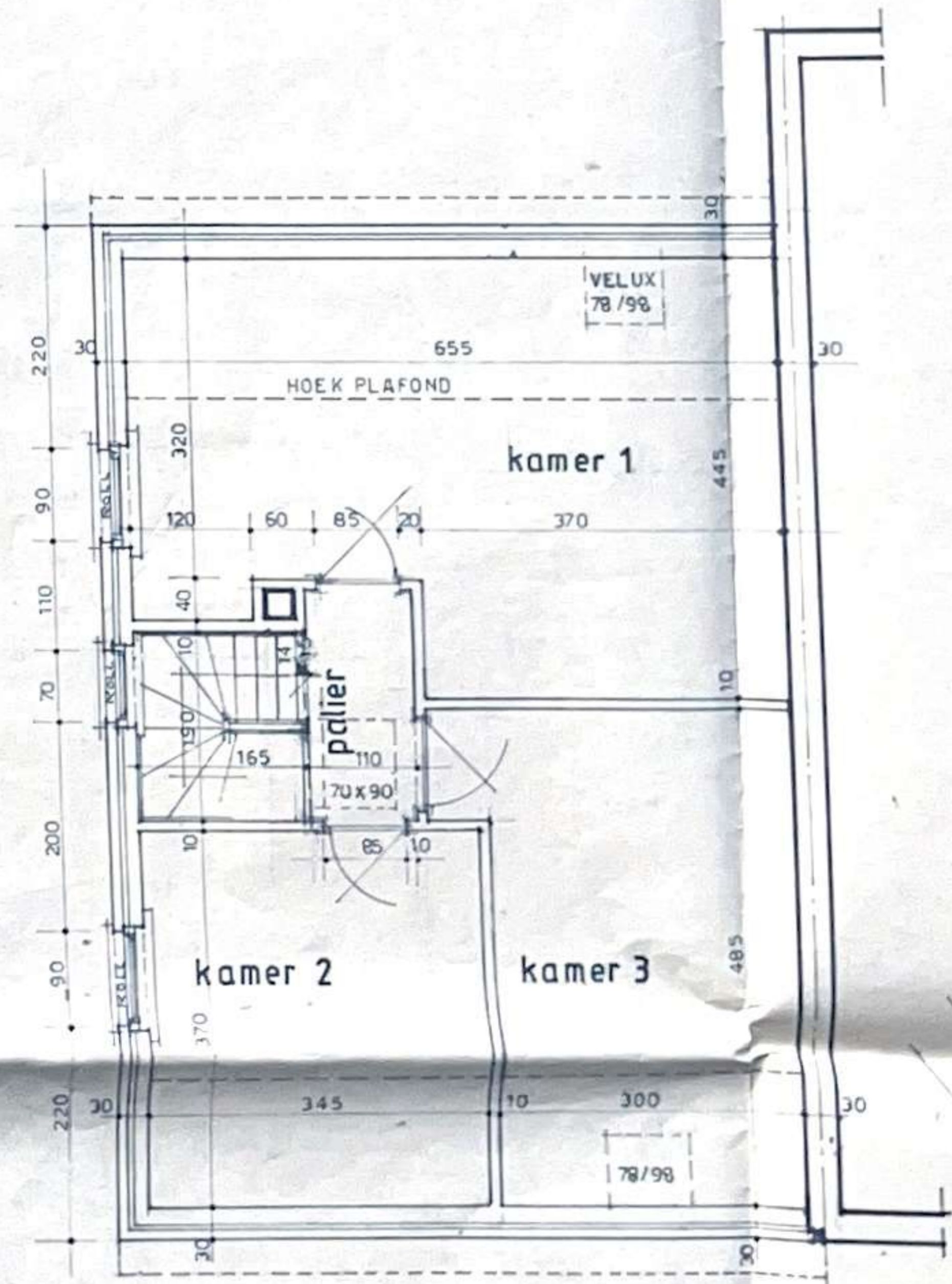
GEVELMUUR GEBUUR RECHTS



plat dak  
ASFALTERING



1<sup>e</sup> VERDIEPING



2<sup>e</sup> VERDIEPING

ROOD-BRUINE PANNEN

HANGGOTEN ZINK

ROOD-BRUINE GEVELSTENEN

DORPELS BLAUWSTEEN

SCHRIJNWERK HOUT BRUIN

ALU BRUIN

VOORGEVEL

PLINT BLAUWSTEEN

ACHTERGEVEL

GARAGE

