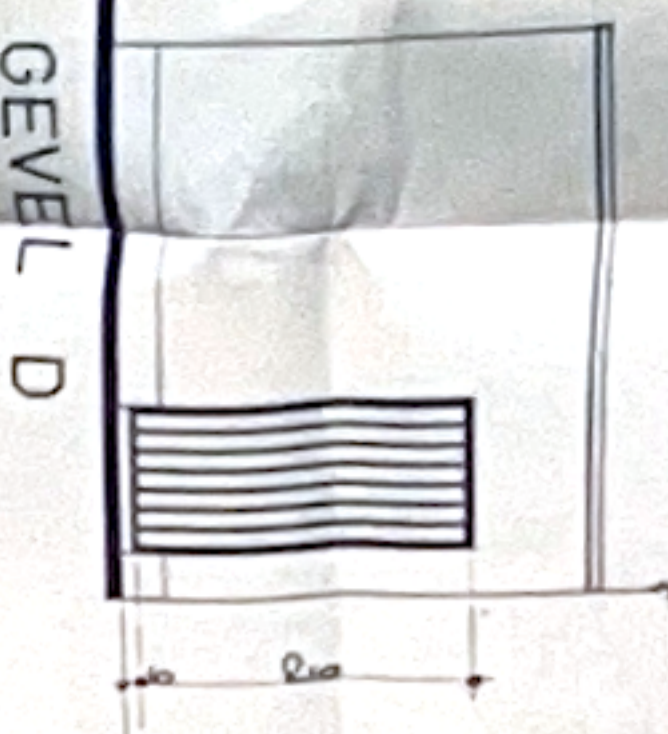


GEVEL D



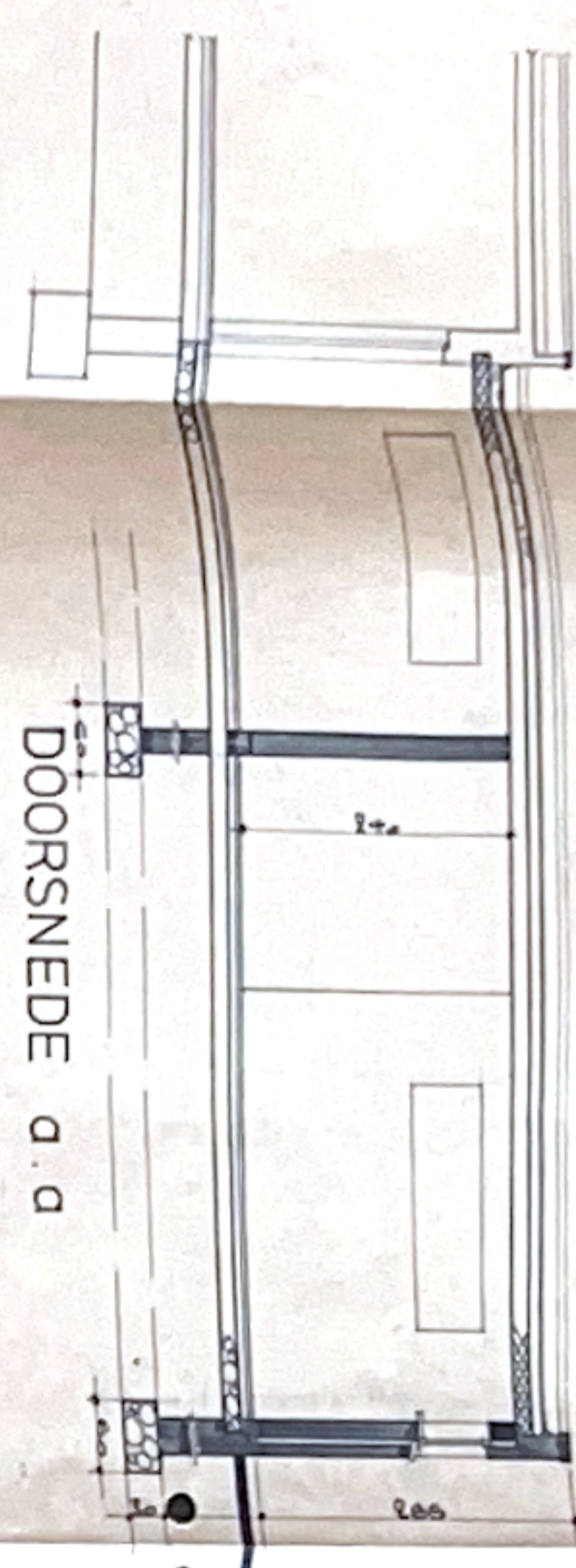
GEVEL A



GEVEL B



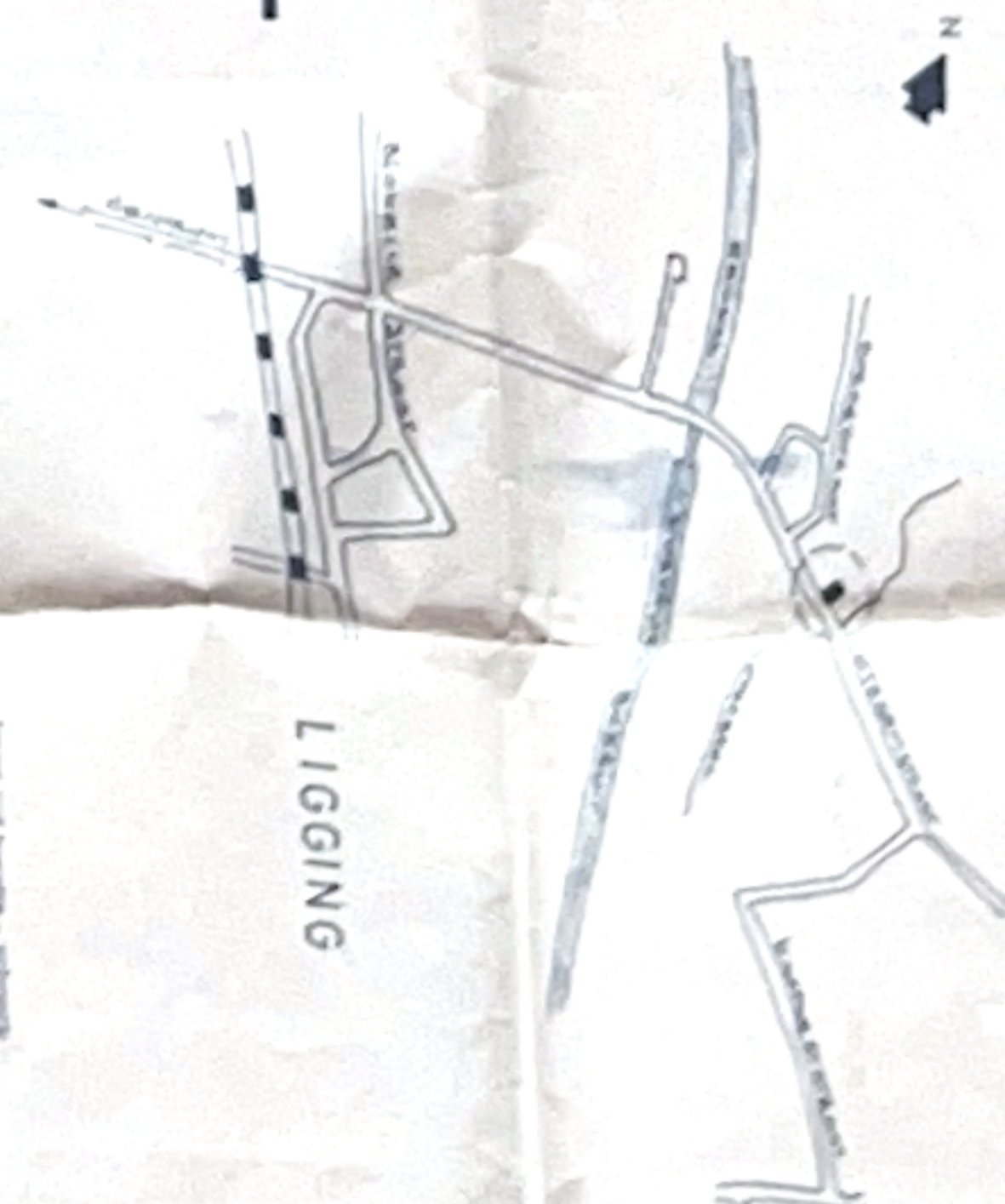
DOORSNEDE d.d



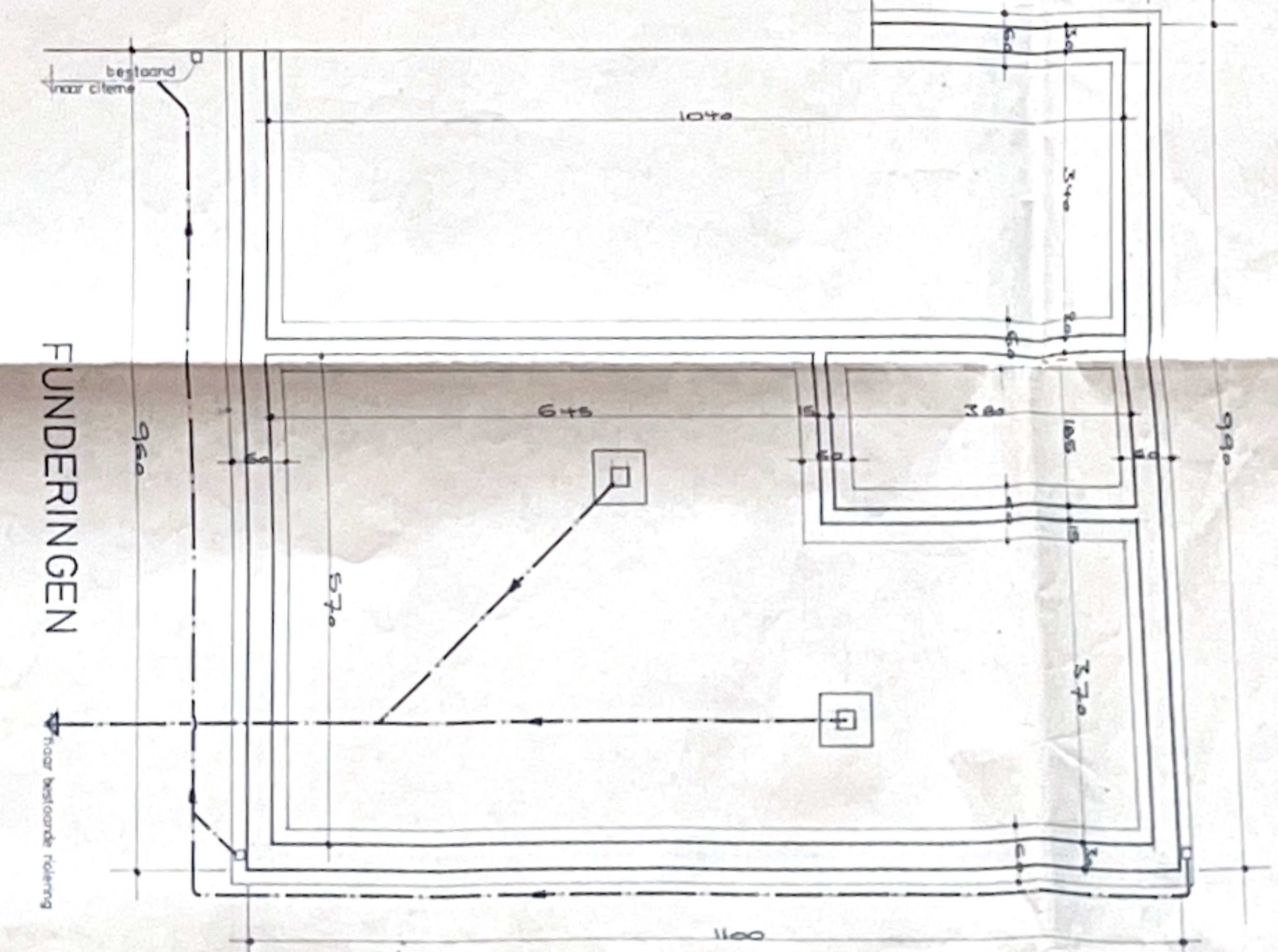
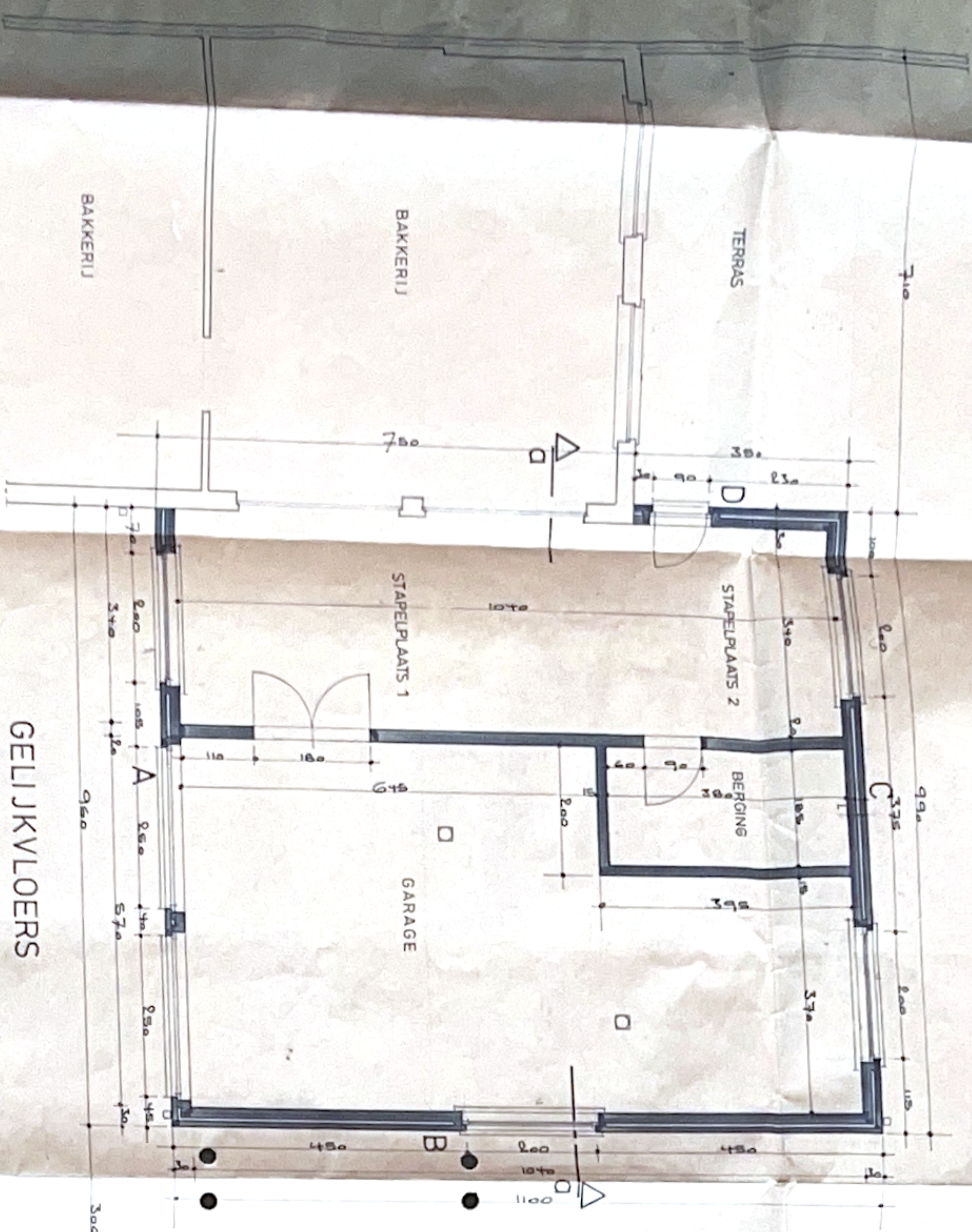
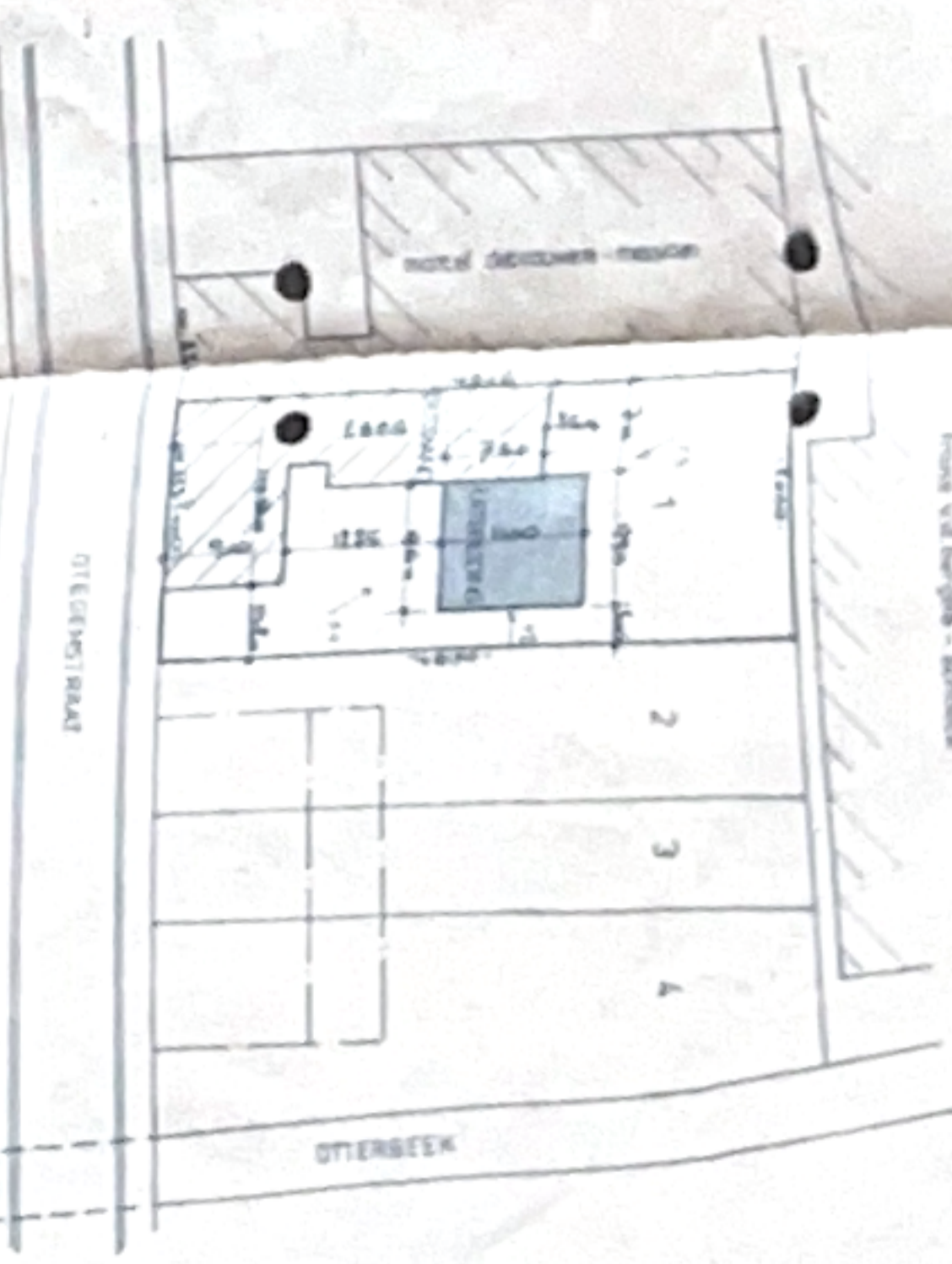
GEVEL C



LIGGING



INPLANTING - SCH 1/500



MATERIAAL  
GEVEL ROZE BEZ ST  
PLINT PAARSE ST  
106,65 m<sup>2</sup>

PROVINCE: WEST VLAANDEREN

STAD: ZWEVEGEM

DOSSIER NR. **ONTWERP:**  
UITBREIDING BAKKERIJ

LIGGING: DIEGENSTRAT 323 site B.n.r. JK.4706

OPDRACHTGEVER: SIERENS GILBERT

DIENSTSTRAAT 323

B550 ZWEVEGEM

ARCHITECT: libbrecht Jan Overlootstraat 70 8730 Harlebekel tel. 056/712964

plan	getekend	datum
schaal	1/50	